

# ATTACHMENT A

## ATTACHMENT A

### PROPOSED DRAWINGS

**111-139 DARLINGHURST ROAD AND  
224-226 VICTORIA ROAD, POTTS POINT  
(FORMER CREST HOTEL)**











# ATTACHMENT A

**LEGEND**

- 1. EXISTING WALL
- 2. EXISTING WINDOW
- 3. EXISTING DOOR
- 4. EXISTING ELECTRICAL SWITCHBOARD
- 5. EXISTING FIRE INDICATOR PANEL
- 6. EXISTING FIRE INDICATOR PANEL
- 7. EXISTING COVERFLOW
- 8. EXISTING COVERFLOW
- 9. EXISTING COVERFLOW
- 10. EXISTING COVERFLOW
- 11. EXISTING COVERFLOW
- 12. EXISTING COVERFLOW
- 13. EXISTING COVERFLOW
- 14. EXISTING COVERFLOW
- 15. EXISTING COVERFLOW
- 16. EXISTING COVERFLOW
- 17. EXISTING COVERFLOW
- 18. EXISTING COVERFLOW
- 19. EXISTING COVERFLOW
- 20. EXISTING COVERFLOW
- 21. EXISTING COVERFLOW
- 22. EXISTING COVERFLOW
- 23. EXISTING COVERFLOW
- 24. EXISTING COVERFLOW
- 25. EXISTING COVERFLOW
- 26. EXISTING COVERFLOW
- 27. EXISTING COVERFLOW
- 28. EXISTING COVERFLOW
- 29. EXISTING COVERFLOW
- 30. EXISTING COVERFLOW
- 31. EXISTING COVERFLOW
- 32. EXISTING COVERFLOW
- 33. EXISTING COVERFLOW
- 34. EXISTING COVERFLOW
- 35. EXISTING COVERFLOW
- 36. EXISTING COVERFLOW
- 37. EXISTING COVERFLOW
- 38. EXISTING COVERFLOW
- 39. EXISTING COVERFLOW
- 40. EXISTING COVERFLOW
- 41. EXISTING COVERFLOW
- 42. EXISTING COVERFLOW
- 43. EXISTING COVERFLOW
- 44. EXISTING COVERFLOW
- 45. EXISTING COVERFLOW
- 46. EXISTING COVERFLOW
- 47. EXISTING COVERFLOW
- 48. EXISTING COVERFLOW
- 49. EXISTING COVERFLOW
- 50. EXISTING COVERFLOW
- 51. EXISTING COVERFLOW
- 52. EXISTING COVERFLOW
- 53. EXISTING COVERFLOW
- 54. EXISTING COVERFLOW
- 55. EXISTING COVERFLOW
- 56. EXISTING COVERFLOW
- 57. EXISTING COVERFLOW
- 58. EXISTING COVERFLOW
- 59. EXISTING COVERFLOW
- 60. EXISTING COVERFLOW
- 61. EXISTING COVERFLOW
- 62. EXISTING COVERFLOW
- 63. EXISTING COVERFLOW
- 64. EXISTING COVERFLOW
- 65. EXISTING COVERFLOW
- 66. EXISTING COVERFLOW
- 67. EXISTING COVERFLOW
- 68. EXISTING COVERFLOW
- 69. EXISTING COVERFLOW
- 70. EXISTING COVERFLOW
- 71. EXISTING COVERFLOW
- 72. EXISTING COVERFLOW
- 73. EXISTING COVERFLOW
- 74. EXISTING COVERFLOW
- 75. EXISTING COVERFLOW
- 76. EXISTING COVERFLOW
- 77. EXISTING COVERFLOW
- 78. EXISTING COVERFLOW
- 79. EXISTING COVERFLOW
- 80. EXISTING COVERFLOW
- 81. EXISTING COVERFLOW
- 82. EXISTING COVERFLOW
- 83. EXISTING COVERFLOW
- 84. EXISTING COVERFLOW
- 85. EXISTING COVERFLOW
- 86. EXISTING COVERFLOW
- 87. EXISTING COVERFLOW
- 88. EXISTING COVERFLOW
- 89. EXISTING COVERFLOW
- 90. EXISTING COVERFLOW
- 91. EXISTING COVERFLOW
- 92. EXISTING COVERFLOW
- 93. EXISTING COVERFLOW
- 94. EXISTING COVERFLOW
- 95. EXISTING COVERFLOW
- 96. EXISTING COVERFLOW
- 97. EXISTING COVERFLOW
- 98. EXISTING COVERFLOW
- 99. EXISTING COVERFLOW
- 100. EXISTING COVERFLOW

**PLANT**

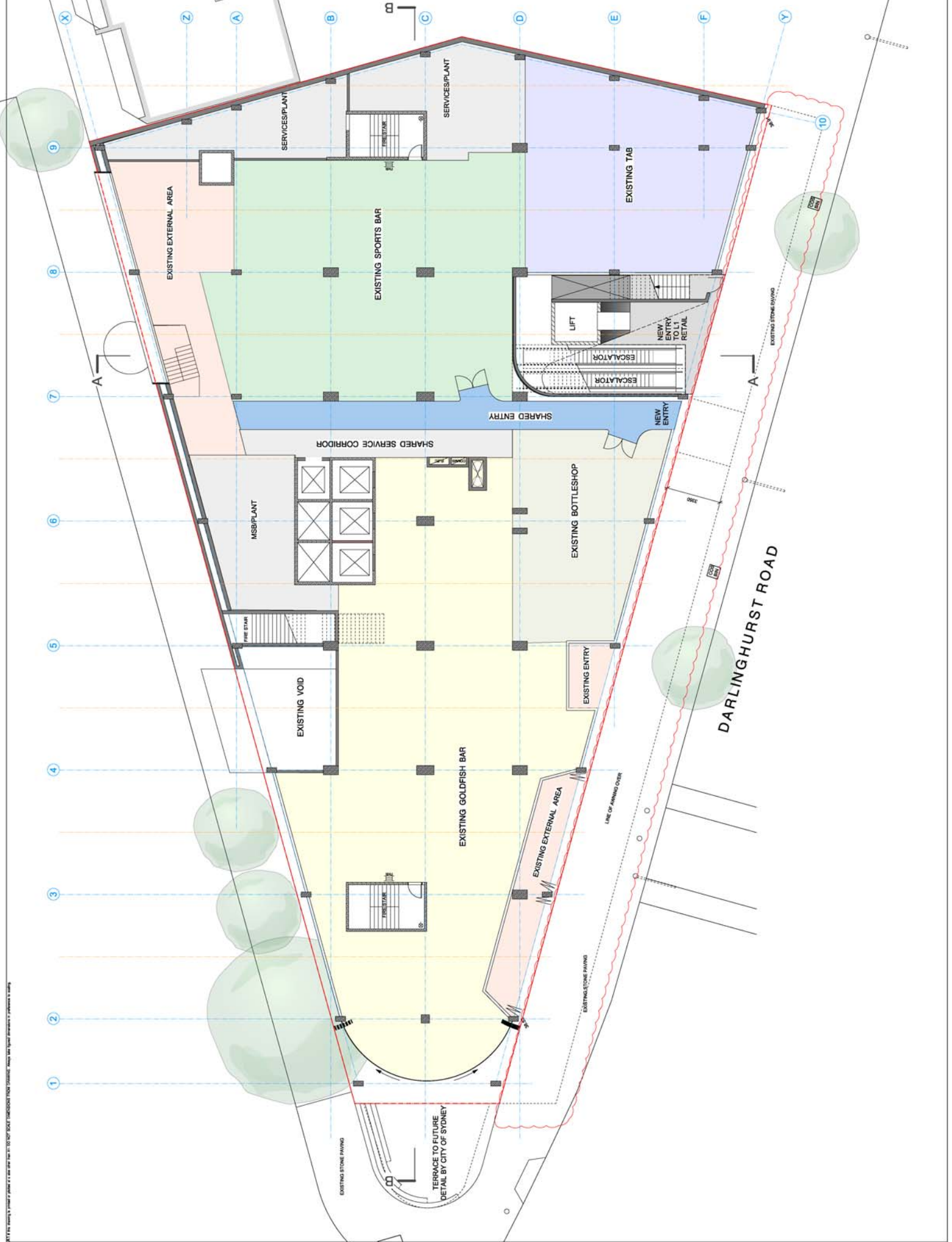
- 1. PLANT
- 2. PLANT
- 3. PLANT
- 4. PLANT
- 5. PLANT
- 6. PLANT
- 7. PLANT
- 8. PLANT
- 9. PLANT
- 10. PLANT
- 11. PLANT
- 12. PLANT
- 13. PLANT
- 14. PLANT
- 15. PLANT
- 16. PLANT
- 17. PLANT
- 18. PLANT
- 19. PLANT
- 20. PLANT
- 21. PLANT
- 22. PLANT
- 23. PLANT
- 24. PLANT
- 25. PLANT
- 26. PLANT
- 27. PLANT
- 28. PLANT
- 29. PLANT
- 30. PLANT
- 31. PLANT
- 32. PLANT
- 33. PLANT
- 34. PLANT
- 35. PLANT
- 36. PLANT
- 37. PLANT
- 38. PLANT
- 39. PLANT
- 40. PLANT
- 41. PLANT
- 42. PLANT
- 43. PLANT
- 44. PLANT
- 45. PLANT
- 46. PLANT
- 47. PLANT
- 48. PLANT
- 49. PLANT
- 50. PLANT
- 51. PLANT
- 52. PLANT
- 53. PLANT
- 54. PLANT
- 55. PLANT
- 56. PLANT
- 57. PLANT
- 58. PLANT
- 59. PLANT
- 60. PLANT
- 61. PLANT
- 62. PLANT
- 63. PLANT
- 64. PLANT
- 65. PLANT
- 66. PLANT
- 67. PLANT
- 68. PLANT
- 69. PLANT
- 70. PLANT
- 71. PLANT
- 72. PLANT
- 73. PLANT
- 74. PLANT
- 75. PLANT
- 76. PLANT
- 77. PLANT
- 78. PLANT
- 79. PLANT
- 80. PLANT
- 81. PLANT
- 82. PLANT
- 83. PLANT
- 84. PLANT
- 85. PLANT
- 86. PLANT
- 87. PLANT
- 88. PLANT
- 89. PLANT
- 90. PLANT
- 91. PLANT
- 92. PLANT
- 93. PLANT
- 94. PLANT
- 95. PLANT
- 96. PLANT
- 97. PLANT
- 98. PLANT
- 99. PLANT
- 100. PLANT

**ISSUE STATUS**

NO.	DESCRIPTION	DATE
1	ISSUED FOR PERMIT	11/11/14
2	ISSUED FOR PERMIT	11/11/14
3	ISSUED FOR PERMIT	11/11/14
4	ISSUED FOR PERMIT	11/11/14
5	ISSUED FOR PERMIT	11/11/14
6	ISSUED FOR PERMIT	11/11/14
7	ISSUED FOR PERMIT	11/11/14
8	ISSUED FOR PERMIT	11/11/14
9	ISSUED FOR PERMIT	11/11/14
10	ISSUED FOR PERMIT	11/11/14
11	ISSUED FOR PERMIT	11/11/14
12	ISSUED FOR PERMIT	11/11/14
13	ISSUED FOR PERMIT	11/11/14
14	ISSUED FOR PERMIT	11/11/14
15	ISSUED FOR PERMIT	11/11/14
16	ISSUED FOR PERMIT	11/11/14
17	ISSUED FOR PERMIT	11/11/14
18	ISSUED FOR PERMIT	11/11/14
19	ISSUED FOR PERMIT	11/11/14
20	ISSUED FOR PERMIT	11/11/14
21	ISSUED FOR PERMIT	11/11/14
22	ISSUED FOR PERMIT	11/11/14
23	ISSUED FOR PERMIT	11/11/14
24	ISSUED FOR PERMIT	11/11/14
25	ISSUED FOR PERMIT	11/11/14
26	ISSUED FOR PERMIT	11/11/14
27	ISSUED FOR PERMIT	11/11/14
28	ISSUED FOR PERMIT	11/11/14
29	ISSUED FOR PERMIT	11/11/14
30	ISSUED FOR PERMIT	11/11/14
31	ISSUED FOR PERMIT	11/11/14
32	ISSUED FOR PERMIT	11/11/14
33	ISSUED FOR PERMIT	11/11/14
34	ISSUED FOR PERMIT	11/11/14
35	ISSUED FOR PERMIT	11/11/14
36	ISSUED FOR PERMIT	11/11/14
37	ISSUED FOR PERMIT	11/11/14
38	ISSUED FOR PERMIT	11/11/14
39	ISSUED FOR PERMIT	11/11/14
40	ISSUED FOR PERMIT	11/11/14
41	ISSUED FOR PERMIT	11/11/14
42	ISSUED FOR PERMIT	11/11/14
43	ISSUED FOR PERMIT	11/11/14
44	ISSUED FOR PERMIT	11/11/14
45	ISSUED FOR PERMIT	11/11/14
46	ISSUED FOR PERMIT	11/11/14
47	ISSUED FOR PERMIT	11/11/14
48	ISSUED FOR PERMIT	11/11/14
49	ISSUED FOR PERMIT	11/11/14
50	ISSUED FOR PERMIT	11/11/14
51	ISSUED FOR PERMIT	11/11/14
52	ISSUED FOR PERMIT	11/11/14
53	ISSUED FOR PERMIT	11/11/14
54	ISSUED FOR PERMIT	11/11/14
55	ISSUED FOR PERMIT	11/11/14
56	ISSUED FOR PERMIT	11/11/14
57	ISSUED FOR PERMIT	11/11/14
58	ISSUED FOR PERMIT	11/11/14
59	ISSUED FOR PERMIT	11/11/14
60	ISSUED FOR PERMIT	11/11/14
61	ISSUED FOR PERMIT	11/11/14
62	ISSUED FOR PERMIT	11/11/14
63	ISSUED FOR PERMIT	11/11/14
64	ISSUED FOR PERMIT	11/11/14
65	ISSUED FOR PERMIT	11/11/14
66	ISSUED FOR PERMIT	11/11/14
67	ISSUED FOR PERMIT	11/11/14
68	ISSUED FOR PERMIT	11/11/14
69	ISSUED FOR PERMIT	11/11/14
70	ISSUED FOR PERMIT	11/11/14
71	ISSUED FOR PERMIT	11/11/14
72	ISSUED FOR PERMIT	11/11/14
73	ISSUED FOR PERMIT	11/11/14
74	ISSUED FOR PERMIT	11/11/14
75	ISSUED FOR PERMIT	11/11/14
76	ISSUED FOR PERMIT	11/11/14
77	ISSUED FOR PERMIT	11/11/14
78	ISSUED FOR PERMIT	11/11/14
79	ISSUED FOR PERMIT	11/11/14
80	ISSUED FOR PERMIT	11/11/14
81	ISSUED FOR PERMIT	11/11/14
82	ISSUED FOR PERMIT	11/11/14
83	ISSUED FOR PERMIT	11/11/14
84	ISSUED FOR PERMIT	11/11/14
85	ISSUED FOR PERMIT	11/11/14
86	ISSUED FOR PERMIT	11/11/14
87	ISSUED FOR PERMIT	11/11/14
88	ISSUED FOR PERMIT	11/11/14
89	ISSUED FOR PERMIT	11/11/14
90	ISSUED FOR PERMIT	11/11/14
91	ISSUED FOR PERMIT	11/11/14
92	ISSUED FOR PERMIT	11/11/14
93	ISSUED FOR PERMIT	11/11/14
94	ISSUED FOR PERMIT	11/11/14
95	ISSUED FOR PERMIT	11/11/14
96	ISSUED FOR PERMIT	11/11/14
97	ISSUED FOR PERMIT	11/11/14
98	ISSUED FOR PERMIT	11/11/14
99	ISSUED FOR PERMIT	11/11/14
100	ISSUED FOR PERMIT	11/11/14

**THE CHEST**  
 111-139 DARLINGHURST RD  
 POTTS POINT  
 NSW 1585

**CLIENT:** Mr. Daniel - Star Avenue  
**PROJECT MANAGEMENT:** BM Lend Lease  
**DATE:** 11/11/14  
**SCALE:** 1:100 @ A1, 1:500 @ A2  
**TITLE:** GROUND FLOOR PLAN (DARLINGHURST RD)  
**PROJECT NO.:** 1667  
**DATE:** DA B  
**REVISED NO.:** 1667\*04



ATTN: This document is a preliminary drawing and is not to be used for construction purposes. Any use of this document is at the user's risk. The City of Sydney is not responsible for any errors or omissions in this document.



# ATTACHMENT A

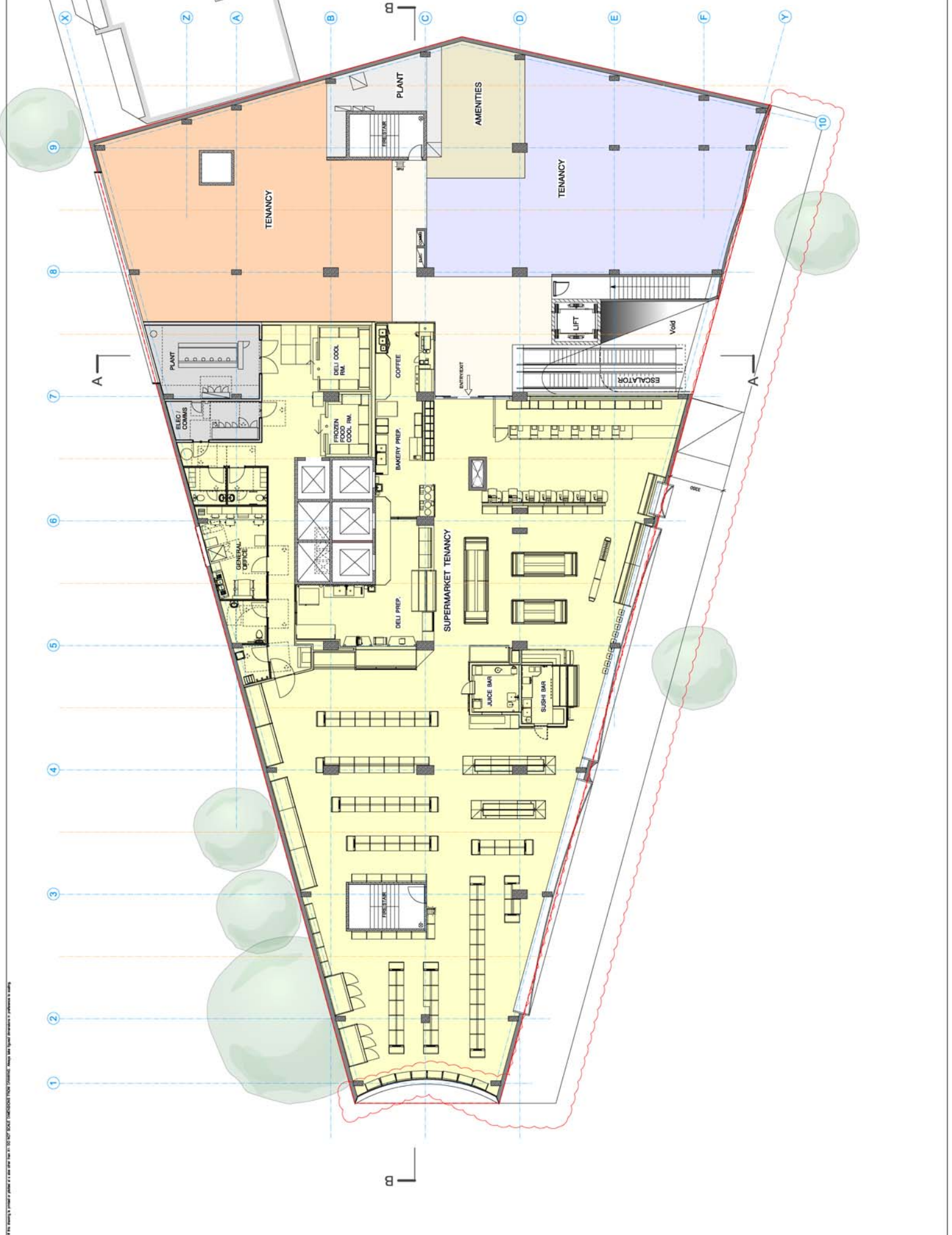
**LEGEND**

1	CONCRETE
2	GLASS
3	ELECTRICAL SWITCHBOARD
4	FIRE INDICATOR
5	FIRE INDICATOR PANEL
6	FIRE INDICATOR COVER
7	COVERFLOW
8	COVERFLOW
9	COVERFLOW
10	COVERFLOW
11	COVERFLOW
12	COVERFLOW
13	COVERFLOW
14	COVERFLOW
15	COVERFLOW
16	COVERFLOW
17	COVERFLOW
18	COVERFLOW
19	COVERFLOW
20	COVERFLOW
21	COVERFLOW
22	COVERFLOW
23	COVERFLOW
24	COVERFLOW
25	COVERFLOW
26	COVERFLOW
27	COVERFLOW
28	COVERFLOW
29	COVERFLOW
30	COVERFLOW
31	COVERFLOW
32	COVERFLOW
33	COVERFLOW
34	COVERFLOW
35	COVERFLOW
36	COVERFLOW
37	COVERFLOW
38	COVERFLOW
39	COVERFLOW
40	COVERFLOW
41	COVERFLOW
42	COVERFLOW
43	COVERFLOW
44	COVERFLOW
45	COVERFLOW
46	COVERFLOW
47	COVERFLOW
48	COVERFLOW
49	COVERFLOW
50	COVERFLOW
51	COVERFLOW
52	COVERFLOW
53	COVERFLOW
54	COVERFLOW
55	COVERFLOW
56	COVERFLOW
57	COVERFLOW
58	COVERFLOW
59	COVERFLOW
60	COVERFLOW
61	COVERFLOW
62	COVERFLOW
63	COVERFLOW
64	COVERFLOW
65	COVERFLOW
66	COVERFLOW
67	COVERFLOW
68	COVERFLOW
69	COVERFLOW
70	COVERFLOW
71	COVERFLOW
72	COVERFLOW
73	COVERFLOW
74	COVERFLOW
75	COVERFLOW
76	COVERFLOW
77	COVERFLOW
78	COVERFLOW
79	COVERFLOW
80	COVERFLOW
81	COVERFLOW
82	COVERFLOW
83	COVERFLOW
84	COVERFLOW
85	COVERFLOW
86	COVERFLOW
87	COVERFLOW
88	COVERFLOW
89	COVERFLOW
90	COVERFLOW
91	COVERFLOW
92	COVERFLOW
93	COVERFLOW
94	COVERFLOW
95	COVERFLOW
96	COVERFLOW
97	COVERFLOW
98	COVERFLOW
99	COVERFLOW
100	COVERFLOW

**ISSUE STATUS**

NO.	DESCRIPTION	DATE
1	ISSUE STATUS	
2	ISSUE STATUS	
3	ISSUE STATUS	
4	ISSUE STATUS	
5	ISSUE STATUS	
6	ISSUE STATUS	
7	ISSUE STATUS	
8	ISSUE STATUS	
9	ISSUE STATUS	
10	ISSUE STATUS	
11	ISSUE STATUS	
12	ISSUE STATUS	
13	ISSUE STATUS	
14	ISSUE STATUS	
15	ISSUE STATUS	
16	ISSUE STATUS	
17	ISSUE STATUS	
18	ISSUE STATUS	
19	ISSUE STATUS	
20	ISSUE STATUS	
21	ISSUE STATUS	
22	ISSUE STATUS	
23	ISSUE STATUS	
24	ISSUE STATUS	
25	ISSUE STATUS	
26	ISSUE STATUS	
27	ISSUE STATUS	
28	ISSUE STATUS	
29	ISSUE STATUS	
30	ISSUE STATUS	
31	ISSUE STATUS	
32	ISSUE STATUS	
33	ISSUE STATUS	
34	ISSUE STATUS	
35	ISSUE STATUS	
36	ISSUE STATUS	
37	ISSUE STATUS	
38	ISSUE STATUS	
39	ISSUE STATUS	
40	ISSUE STATUS	
41	ISSUE STATUS	
42	ISSUE STATUS	
43	ISSUE STATUS	
44	ISSUE STATUS	
45	ISSUE STATUS	
46	ISSUE STATUS	
47	ISSUE STATUS	
48	ISSUE STATUS	
49	ISSUE STATUS	
50	ISSUE STATUS	
51	ISSUE STATUS	
52	ISSUE STATUS	
53	ISSUE STATUS	
54	ISSUE STATUS	
55	ISSUE STATUS	
56	ISSUE STATUS	
57	ISSUE STATUS	
58	ISSUE STATUS	
59	ISSUE STATUS	
60	ISSUE STATUS	
61	ISSUE STATUS	
62	ISSUE STATUS	
63	ISSUE STATUS	
64	ISSUE STATUS	
65	ISSUE STATUS	
66	ISSUE STATUS	
67	ISSUE STATUS	
68	ISSUE STATUS	
69	ISSUE STATUS	
70	ISSUE STATUS	
71	ISSUE STATUS	
72	ISSUE STATUS	
73	ISSUE STATUS	
74	ISSUE STATUS	
75	ISSUE STATUS	
76	ISSUE STATUS	
77	ISSUE STATUS	
78	ISSUE STATUS	
79	ISSUE STATUS	
80	ISSUE STATUS	
81	ISSUE STATUS	
82	ISSUE STATUS	
83	ISSUE STATUS	
84	ISSUE STATUS	
85	ISSUE STATUS	
86	ISSUE STATUS	
87	ISSUE STATUS	
88	ISSUE STATUS	
89	ISSUE STATUS	
90	ISSUE STATUS	
91	ISSUE STATUS	
92	ISSUE STATUS	
93	ISSUE STATUS	
94	ISSUE STATUS	
95	ISSUE STATUS	
96	ISSUE STATUS	
97	ISSUE STATUS	
98	ISSUE STATUS	
99	ISSUE STATUS	
100	ISSUE STATUS	

CLIENT: THE CHEST  
 PROJECT: 111-39  
 ADDRESS: 111-39 HAYLEN STREET  
 LOCATION: POTTS POINT  
 ARCHITECT: DUNNICH BLOCK JOHNSON  
 DATE: DEC 2014  
 SCALE: 1:100 @ A1, 1:500 @ A2  
 DRAWN: P. CHURCHILL  
 CHECKED: M. JONES  
 DATE: DEC 2014  
 SCALE: 1:100 @ A1, 1:500 @ A2  
 TITLE: LEVEL 1  
 PROJECT NO: 1667  
 DRAWING NO: DA B  
 SHEET NO: 1667\*05

















































# ATTACHMENT A

**LEGEND**

AC	ALUMINUM CLADDING
AD	ADAPTIVE DESIGN
AP	APPLY FINISH
AS	ASBESTOS
AV	AVOIDANCE
BA	BALCONY
BB	BALCONY RAILING
BC	BALCONY FLOOR
BD	BALCONY DOOR
BE	BALCONY GLASS
BF	BALCONY GLASS RAILING
BG	BALCONY GLASS PANEL
BH	BALCONY GLASS RAILING PANEL
BI	BALCONY GLASS RAILING PANEL
BJ	BALCONY GLASS RAILING PANEL
BK	BALCONY GLASS RAILING PANEL
BL	BALCONY GLASS RAILING PANEL
BM	BALCONY GLASS RAILING PANEL
BN	BALCONY GLASS RAILING PANEL
BO	BALCONY GLASS RAILING PANEL
BP	BALCONY GLASS RAILING PANEL
BQ	BALCONY GLASS RAILING PANEL
BR	BALCONY GLASS RAILING PANEL
BS	BALCONY GLASS RAILING PANEL
BT	BALCONY GLASS RAILING PANEL
BU	BALCONY GLASS RAILING PANEL
BV	BALCONY GLASS RAILING PANEL
BW	BALCONY GLASS RAILING PANEL
BX	BALCONY GLASS RAILING PANEL
BY	BALCONY GLASS RAILING PANEL
BZ	BALCONY GLASS RAILING PANEL
CA	CASE
CB	CASE
CC	CASE
CD	CASE
CE	CASE
CF	CASE
CG	CASE
CH	CASE
CI	CASE
CJ	CASE
CK	CASE
CL	CASE
CM	CASE
CN	CASE
CO	CASE
CP	CASE
CQ	CASE
CR	CASE
CS	CASE
CT	CASE
CU	CASE
CV	CASE
CW	CASE
CX	CASE
CY	CASE
CZ	CASE
DA	DAY
DB	DAY
DC	DAY
DD	DAY
DE	DAY
DF	DAY
DG	DAY
DH	DAY
DI	DAY
DJ	DAY
DK	DAY
DL	DAY
DM	DAY
DN	DAY
DO	DAY
DP	DAY
DQ	DAY
DR	DAY
DS	DAY
DT	DAY
DU	DAY
DV	DAY
DW	DAY
DX	DAY
DY	DAY
DZ	DAY
EA	ELECTRICAL
EB	ELECTRICAL
EC	ELECTRICAL
ED	ELECTRICAL
EE	ELECTRICAL
EF	ELECTRICAL
EG	ELECTRICAL
EH	ELECTRICAL
EI	ELECTRICAL
EJ	ELECTRICAL
EK	ELECTRICAL
EL	ELECTRICAL
EM	ELECTRICAL
EN	ELECTRICAL
EO	ELECTRICAL
EP	ELECTRICAL
EQ	ELECTRICAL
ER	ELECTRICAL
ES	ELECTRICAL
ET	ELECTRICAL
EU	ELECTRICAL
EV	ELECTRICAL
EW	ELECTRICAL
EX	ELECTRICAL
EY	ELECTRICAL
EZ	ELECTRICAL
FA	FLOOR
FB	FLOOR
FC	FLOOR
FD	FLOOR
FE	FLOOR
FF	FLOOR
FG	FLOOR
FH	FLOOR
FI	FLOOR
FJ	FLOOR
FK	FLOOR
FL	FLOOR
FM	FLOOR
FN	FLOOR
FO	FLOOR
FP	FLOOR
FQ	FLOOR
FR	FLOOR
FS	FLOOR
FT	FLOOR
FU	FLOOR
FV	FLOOR
FW	FLOOR
FX	FLOOR
FY	FLOOR
FZ	FLOOR
GA	GLASS
GB	GLASS
GC	GLASS
GD	GLASS
GE	GLASS
GF	GLASS
GG	GLASS
GH	GLASS
GI	GLASS
GJ	GLASS
GK	GLASS
GL	GLASS
GM	GLASS
GN	GLASS
GO	GLASS
GP	GLASS
GQ	GLASS
GR	GLASS
GS	GLASS
GT	GLASS
GU	GLASS
GV	GLASS
GW	GLASS
GX	GLASS
GY	GLASS
GZ	GLASS
HA	HANDRAIL
HB	HANDRAIL
HC	HANDRAIL
HD	HANDRAIL
HE	HANDRAIL
HF	HANDRAIL
HG	HANDRAIL
HH	HANDRAIL
HI	HANDRAIL
HJ	HANDRAIL
HK	HANDRAIL
HL	HANDRAIL
HM	HANDRAIL
HN	HANDRAIL
HO	HANDRAIL
HP	HANDRAIL
HQ	HANDRAIL
HR	HANDRAIL
HS	HANDRAIL
HT	HANDRAIL
HU	HANDRAIL
HV	HANDRAIL
HW	HANDRAIL
HX	HANDRAIL
HY	HANDRAIL
HZ	HANDRAIL
IA	INTERIOR
IB	INTERIOR
IC	INTERIOR
ID	INTERIOR
IE	INTERIOR
IF	INTERIOR
IG	INTERIOR
IH	INTERIOR
II	INTERIOR
IJ	INTERIOR
IK	INTERIOR
IL	INTERIOR
IM	INTERIOR
IN	INTERIOR
IO	INTERIOR
IP	INTERIOR
IQ	INTERIOR
IR	INTERIOR
IS	INTERIOR
IT	INTERIOR
IU	INTERIOR
IV	INTERIOR
IW	INTERIOR
IX	INTERIOR
IY	INTERIOR
IZ	INTERIOR
JA	JOB
JB	JOB
JC	JOB
JD	JOB
JE	JOB
JF	JOB
JG	JOB
JH	JOB
JI	JOB
JJ	JOB
JK	JOB
JL	JOB
JM	JOB
JN	JOB
JO	JOB
JP	JOB
JQ	JOB
JR	JOB
JS	JOB
JT	JOB
JU	JOB
JV	JOB
JW	JOB
JX	JOB
JY	JOB
JZ	JOB
KA	KITCHEN
KB	KITCHEN
KC	KITCHEN
KD	KITCHEN
KE	KITCHEN
KF	KITCHEN
KG	KITCHEN
KH	KITCHEN
KI	KITCHEN
KJ	KITCHEN
KK	KITCHEN
KL	KITCHEN
KM	KITCHEN
KN	KITCHEN
KO	KITCHEN
KP	KITCHEN
KQ	KITCHEN
KR	KITCHEN
KS	KITCHEN
KT	KITCHEN
KU	KITCHEN
KV	KITCHEN
KW	KITCHEN
KX	KITCHEN
KY	KITCHEN
KZ	KITCHEN
LA	LIVING
LB	LIVING
LC	LIVING
LD	LIVING
LE	LIVING
LF	LIVING
LG	LIVING
LH	LIVING
LI	LIVING
LJ	LIVING
LK	LIVING
LL	LIVING
LM	LIVING
LN	LIVING
LO	LIVING
LP	LIVING
LQ	LIVING
LR	LIVING
LS	LIVING
LT	LIVING
LU	LIVING
LV	LIVING
LW	LIVING
LX	LIVING
LY	LIVING
LZ	LIVING
MA	MATERIAL
MB	MATERIAL
MC	MATERIAL
MD	MATERIAL
ME	MATERIAL
MF	MATERIAL
MG	MATERIAL
MH	MATERIAL
MI	MATERIAL
MJ	MATERIAL
MK	MATERIAL
ML	MATERIAL
MM	MATERIAL
MN	MATERIAL
MO	MATERIAL
MP	MATERIAL
MQ	MATERIAL
MR	MATERIAL
MS	MATERIAL
MT	MATERIAL
MU	MATERIAL
MV	MATERIAL
MW	MATERIAL
MX	MATERIAL
MY	MATERIAL
MZ	MATERIAL
NA	NOISE
NB	NOISE
NC	NOISE
ND	NOISE
NE	NOISE
NF	NOISE
NG	NOISE
NH	NOISE
NI	NOISE
NJ	NOISE
NK	NOISE
NL	NOISE
NM	NOISE
NN	NOISE
NO	NOISE
NP	NOISE
NQ	NOISE
NR	NOISE
NS	NOISE
NT	NOISE
NU	NOISE
NV	NOISE
NW	NOISE
NX	NOISE
NY	NOISE
NZ	NOISE
OA	OFFICE
OB	OFFICE
OC	OFFICE
OD	OFFICE
OE	OFFICE
OF	OFFICE
OG	OFFICE
OH	OFFICE
OI	OFFICE
OJ	OFFICE
OK	OFFICE
OL	OFFICE
OM	OFFICE
ON	OFFICE
OO	OFFICE
OP	OFFICE
OQ	OFFICE
OR	OFFICE
OS	OFFICE
OT	OFFICE
OU	OFFICE
OV	OFFICE
OW	OFFICE
OX	OFFICE
OY	OFFICE
OZ	OFFICE
PA	PARTITION
PB	PARTITION
PC	PARTITION
PD	PARTITION
PE	PARTITION
PF	PARTITION
PG	PARTITION
PH	PARTITION
PI	PARTITION
PJ	PARTITION
PK	PARTITION
PL	PARTITION
PM	PARTITION
PN	PARTITION
PO	PARTITION
PP	PARTITION
PQ	PARTITION
PR	PARTITION
PS	PARTITION
PT	PARTITION
PU	PARTITION
PV	PARTITION
PW	PARTITION
PX	PARTITION
PY	PARTITION
PZ	PARTITION
QA	QUEEN
QB	QUEEN
QC	QUEEN
QD	QUEEN
QE	QUEEN
QF	QUEEN
QG	QUEEN
QH	QUEEN
QI	QUEEN
QJ	QUEEN
QK	QUEEN
QL	QUEEN
QM	QUEEN
QN	QUEEN
QO	QUEEN
QP	QUEEN
QQ	QUEEN
QR	QUEEN
QS	QUEEN
QT	QUEEN
QU	QUEEN
QV	QUEEN
QW	QUEEN
QX	QUEEN
QY	QUEEN
QZ	QUEEN
RA	REAR
RB	REAR
RC	REAR
RD	REAR
RE	REAR
RF	REAR
RG	REAR
RH	REAR
RI	REAR
RJ	REAR
RK	REAR
RL	REAR
RM	REAR
RN	REAR
RO	REAR
RP	REAR
RQ	REAR
RR	REAR
RS	REAR
RT	REAR
RU	REAR
RV	REAR
RW	REAR
RX	REAR
RY	REAR
RZ	REAR
SA	SANITARY
SB	SANITARY
SC	SANITARY
SD	SANITARY
SE	SANITARY
SF	SANITARY
SG	SANITARY
SH	SANITARY
SI	SANITARY
SJ	SANITARY
SK	SANITARY
SL	SANITARY
SM	SANITARY
SN	SANITARY
SO	SANITARY
SP	SANITARY
SQ	SANITARY
SR	SANITARY
SS	SANITARY
ST	SANITARY
SU	SANITARY
SV	SANITARY
SW	SANITARY
SX	SANITARY
SY	SANITARY
SZ	SANITARY
TA	TILE
TB	TILE
TC	TILE
TD	TILE
TE	TILE
TF	TILE
TG	TILE
TH	TILE
TI	TILE
TJ	TILE
TK	TILE
TL	TILE
TM	TILE
TN	TILE
TO	TILE
TP	TILE
TQ	TILE
TR	TILE
TS	TILE
TT	TILE
TU	TILE
TV	TILE
TW	TILE
TX	TILE
TY	TILE
TZ	TILE
UA	UNIT
UB	UNIT
UC	UNIT
UD	UNIT
UE	UNIT
UF	UNIT
UG	UNIT
UH	UNIT
UI	UNIT
UJ	UNIT
UK	UNIT
UL	UNIT
UM	UNIT
UN	UNIT
UO	UNIT
UP	UNIT
UQ	UNIT
UR	UNIT
US	UNIT
UT	UNIT
UU	UNIT
UV	UNIT
UW	UNIT
UX	UNIT
UY	UNIT
UZ	UNIT
VA	VOID
VB	VOID
VC	VOID
VD	VOID
VE	VOID
VF	VOID
VG	VOID
VH	VOID
VI	VOID
VJ	VOID
VK	VOID
VL	VOID
VM	VOID
VN	VOID
VO	VOID
VP	VOID
VQ	VOID
VR	VOID
VS	VOID
VT	VOID
VU	VOID
VV	VOID
VW	VOID
VX	VOID
VY	VOID
VZ	VOID
WA	WALL
WB	WALL
WC	WALL
WD	WALL
WE	WALL
WF	WALL
WG	WALL
WH	WALL
WI	WALL
WJ	WALL
WK	WALL
WL	WALL
WM	WALL
WN	WALL
WO	WALL
WP	WALL
WQ	WALL
WR	WALL
WS	WALL
WT	WALL
WU	WALL
WV	WALL
WW	WALL
WX	WALL
WY	WALL
WZ	WALL
XA	X-RAY
XB	X-RAY
XC	X-RAY
XD	X-RAY
XE	X-RAY
XF	X-RAY
XG	X-RAY
XH	X-RAY
XI	X-RAY
XJ	X-RAY
XK	X-RAY
XL	X-RAY
XM	X-RAY
XN	X-RAY
XO	X-RAY
XP	X-RAY
XQ	X-RAY
XR	X-RAY
XS	X-RAY
XT	X-RAY
XU	X-RAY
XV	X-RAY
XW	X-RAY
XX	X-RAY
XY	X-RAY
XZ	X-RAY
YA	YIELD
YB	YIELD
YC	YIELD
YD	YIELD
YE	YIELD
YF	YIELD
YG	YIELD
YH	YIELD
YI	YIELD
YJ	YIELD
YK	YIELD
YL	YIELD
YM	YIELD
YN	YIELD
YO	YIELD
YP	YIELD
YQ	YIELD
YR	YIELD
YS	YIELD
YT	YIELD
YU	YIELD
YV	YIELD
YW	YIELD
YX	YIELD
YY	YIELD
YZ	YIELD
ZA	ZONE
ZB	ZONE
ZC	ZONE
ZD	ZONE
ZE	ZONE
ZF	ZONE
ZG	ZONE
ZH	ZONE
ZI	ZONE
ZJ	ZONE
ZK	ZONE
ZL	ZONE
ZM	ZONE
ZN	ZONE
ZO	ZONE
ZP	ZONE
ZQ	ZONE
ZR	ZONE
ZS	ZONE
ZT	ZONE
ZU	ZONE
ZV	ZONE
ZW	ZONE
ZX	ZONE
ZY	ZONE
ZZ	ZONE

1	STUDIO
2	1 BED
3	2 BED
4	3 BED
5	BALCONY/PAINT
6	SPACE
7	SERVICES / PLANT
8	REAR COURT

1	STUDIO
2	1 BED
3	2 BED
4	3 BED
5	BALCONY/PAINT
6	SPACE
7	SERVICES / PLANT
8	REAR COURT

1	STUDIO
2	1 BED
3	2 BED
4	3 BED



# ATTACHMENT A

**LEGEND**

AC	1.1 CONCRETE WALLS
AC	1.2 CONCRETE PARTITION WALLS
AC	1.3 CONCRETE FLOOR SLABS
AC	1.4 CONCRETE ROOF
AC	1.5 CONCRETE CHIMNEYS
AC	1.6 CONCRETE STAIRS
AC	1.7 CONCRETE BALCONIES
AC	1.8 CONCRETE TERRACES
AC	1.9 CONCRETE DRIVEWAYS
AC	1.10 CONCRETE PATIOS
AC	1.11 CONCRETE PORCHES
AC	1.12 CONCRETE STAIRS
AC	1.13 CONCRETE BALCONIES
AC	1.14 CONCRETE TERRACES
AC	1.15 CONCRETE DRIVEWAYS
AC	1.16 CONCRETE PATIOS
AC	1.17 CONCRETE PORCHES
AC	1.18 CONCRETE STAIRS
AC	1.19 CONCRETE BALCONIES
AC	1.20 CONCRETE TERRACES
AC	1.21 CONCRETE DRIVEWAYS
AC	1.22 CONCRETE PATIOS
AC	1.23 CONCRETE PORCHES
AC	1.24 CONCRETE STAIRS
AC	1.25 CONCRETE BALCONIES
AC	1.26 CONCRETE TERRACES
AC	1.27 CONCRETE DRIVEWAYS
AC	1.28 CONCRETE PATIOS
AC	1.29 CONCRETE PORCHES
AC	1.30 CONCRETE STAIRS
AC	1.31 CONCRETE BALCONIES
AC	1.32 CONCRETE TERRACES
AC	1.33 CONCRETE DRIVEWAYS
AC	1.34 CONCRETE PATIOS
AC	1.35 CONCRETE PORCHES
AC	1.36 CONCRETE STAIRS
AC	1.37 CONCRETE BALCONIES
AC	1.38 CONCRETE TERRACES
AC	1.39 CONCRETE DRIVEWAYS
AC	1.40 CONCRETE PATIOS
AC	1.41 CONCRETE PORCHES
AC	1.42 CONCRETE STAIRS
AC	1.43 CONCRETE BALCONIES
AC	1.44 CONCRETE TERRACES
AC	1.45 CONCRETE DRIVEWAYS
AC	1.46 CONCRETE PATIOS
AC	1.47 CONCRETE PORCHES
AC	1.48 CONCRETE STAIRS
AC	1.49 CONCRETE BALCONIES
AC	1.50 CONCRETE TERRACES
AC	1.51 CONCRETE DRIVEWAYS
AC	1.52 CONCRETE PATIOS
AC	1.53 CONCRETE PORCHES
AC	1.54 CONCRETE STAIRS
AC	1.55 CONCRETE BALCONIES
AC	1.56 CONCRETE TERRACES
AC	1.57 CONCRETE DRIVEWAYS
AC	1.58 CONCRETE PATIOS
AC	1.59 CONCRETE PORCHES
AC	1.60 CONCRETE STAIRS
AC	1.61 CONCRETE BALCONIES
AC	1.62 CONCRETE TERRACES
AC	1.63 CONCRETE DRIVEWAYS
AC	1.64 CONCRETE PATIOS
AC	1.65 CONCRETE PORCHES
AC	1.66 CONCRETE STAIRS
AC	1.67 CONCRETE BALCONIES
AC	1.68 CONCRETE TERRACES
AC	1.69 CONCRETE DRIVEWAYS
AC	1.70 CONCRETE PATIOS
AC	1.71 CONCRETE PORCHES
AC	1.72 CONCRETE STAIRS
AC	1.73 CONCRETE BALCONIES
AC	1.74 CONCRETE TERRACES
AC	1.75 CONCRETE DRIVEWAYS
AC	1.76 CONCRETE PATIOS
AC	1.77 CONCRETE PORCHES
AC	1.78 CONCRETE STAIRS
AC	1.79 CONCRETE BALCONIES
AC	1.80 CONCRETE TERRACES
AC	1.81 CONCRETE DRIVEWAYS
AC	1.82 CONCRETE PATIOS
AC	1.83 CONCRETE PORCHES
AC	1.84 CONCRETE STAIRS
AC	1.85 CONCRETE BALCONIES
AC	1.86 CONCRETE TERRACES
AC	1.87 CONCRETE DRIVEWAYS
AC	1.88 CONCRETE PATIOS
AC	1.89 CONCRETE PORCHES
AC	1.90 CONCRETE STAIRS
AC	1.91 CONCRETE BALCONIES
AC	1.92 CONCRETE TERRACES
AC	1.93 CONCRETE DRIVEWAYS
AC	1.94 CONCRETE PATIOS
AC	1.95 CONCRETE PORCHES
AC	1.96 CONCRETE STAIRS
AC	1.97 CONCRETE BALCONIES
AC	1.98 CONCRETE TERRACES
AC	1.99 CONCRETE DRIVEWAYS
AC	2.00 CONCRETE PATIOS
AC	2.01 CONCRETE PORCHES
AC	2.02 CONCRETE STAIRS
AC	2.03 CONCRETE BALCONIES
AC	2.04 CONCRETE TERRACES
AC	2.05 CONCRETE DRIVEWAYS
AC	2.06 CONCRETE PATIOS
AC	2.07 CONCRETE PORCHES
AC	2.08 CONCRETE STAIRS
AC	2.09 CONCRETE BALCONIES
AC	2.10 CONCRETE TERRACES
AC	2.11 CONCRETE DRIVEWAYS
AC	2.12 CONCRETE PATIOS
AC	2.13 CONCRETE PORCHES
AC	2.14 CONCRETE STAIRS
AC	2.15 CONCRETE BALCONIES
AC	2.16 CONCRETE TERRACES
AC	2.17 CONCRETE DRIVEWAYS
AC	2.18 CONCRETE PATIOS
AC	2.19 CONCRETE PORCHES
AC	2.20 CONCRETE STAIRS
AC	2.21 CONCRETE BALCONIES
AC	2.22 CONCRETE TERRACES
AC	2.23 CONCRETE DRIVEWAYS
AC	2.24 CONCRETE PATIOS
AC	2.25 CONCRETE PORCHES
AC	2.26 CONCRETE STAIRS
AC	2.27 CONCRETE BALCONIES
AC	2.28 CONCRETE TERRACES
AC	2.29 CONCRETE DRIVEWAYS
AC	2.30 CONCRETE PATIOS
AC	2.31 CONCRETE PORCHES
AC	2.32 CONCRETE STAIRS
AC	2.33 CONCRETE BALCONIES
AC	2.34 CONCRETE TERRACES
AC	2.35 CONCRETE DRIVEWAYS
AC	2.36 CONCRETE PATIOS
AC	2.37 CONCRETE PORCHES
AC	2.38 CONCRETE STAIRS
AC	2.39 CONCRETE BALCONIES
AC	2.40 CONCRETE TERRACES
AC	2.41 CONCRETE DRIVEWAYS
AC	2.42 CONCRETE PATIOS
AC	2.43 CONCRETE PORCHES
AC	2.44 CONCRETE STAIRS
AC	2.45 CONCRETE BALCONIES
AC	2.46 CONCRETE TERRACES
AC	2.47 CONCRETE DRIVEWAYS
AC	2.48 CONCRETE PATIOS
AC	2.49 CONCRETE PORCHES
AC	2.50 CONCRETE STAIRS
AC	2.51 CONCRETE BALCONIES
AC	2.52 CONCRETE TERRACES
AC	2.53 CONCRETE DRIVEWAYS
AC	2.54 CONCRETE PATIOS
AC	2.55 CONCRETE PORCHES
AC	2.56 CONCRETE STAIRS
AC	2.57 CONCRETE BALCONIES
AC	2.58 CONCRETE TERRACES
AC	2.59 CONCRETE DRIVEWAYS
AC	2.60 CONCRETE PATIOS
AC	2.61 CONCRETE PORCHES
AC	2.62 CONCRETE STAIRS
AC	2.63 CONCRETE BALCONIES
AC	2.64 CONCRETE TERRACES
AC	2.65 CONCRETE DRIVEWAYS
AC	2.66 CONCRETE PATIOS
AC	2.67 CONCRETE PORCHES
AC	2.68 CONCRETE STAIRS
AC	2.69 CONCRETE BALCONIES
AC	2.70 CONCRETE TERRACES
AC	2.71 CONCRETE DRIVEWAYS
AC	2.72 CONCRETE PATIOS
AC	2.73 CONCRETE PORCHES
AC	2.74 CONCRETE STAIRS
AC	2.75 CONCRETE BALCONIES
AC	2.76 CONCRETE TERRACES
AC	2.77 CONCRETE DRIVEWAYS
AC	2.78 CONCRETE PATIOS
AC	2.79 CONCRETE PORCHES
AC	2.80 CONCRETE STAIRS
AC	2.81 CONCRETE BALCONIES
AC	2.82 CONCRETE TERRACES
AC	2.83 CONCRETE DRIVEWAYS
AC	2.84 CONCRETE PATIOS
AC	2.85 CONCRETE PORCHES
AC	2.86 CONCRETE STAIRS
AC	2.87 CONCRETE BALCONIES
AC	2.88 CONCRETE TERRACES
AC	2.89 CONCRETE DRIVEWAYS
AC	2.90 CONCRETE PATIOS
AC	2.91 CONCRETE PORCHES
AC	2.92 CONCRETE STAIRS
AC	2.93 CONCRETE BALCONIES
AC	2.94 CONCRETE TERRACES
AC	2.95 CONCRETE DRIVEWAYS
AC	2.96 CONCRETE PATIOS
AC	2.97 CONCRETE PORCHES
AC	2.98 CONCRETE STAIRS
AC	2.99 CONCRETE BALCONIES
AC	3.00 CONCRETE TERRACES

1	STUDIO
2	1 BRD
3	2 BRD
4	3 BRD
5	BALCONY/PATIO
6	SPACE PLANT
7	REAR COURT

1	1.1 CONCRETE WALLS
1	1.2 CONCRETE PARTITION WALLS
1	1.3 CONCRETE FLOOR SLABS
1	1.4 CONCRETE ROOF
1	1.5 CONCRETE CHIMNEYS
1	1.6 CONCRETE STAIRS
1	1.7 CONCRETE BALCONIES
1	1.8 CONCRETE TERRACES
1	1.9 CONCRETE DRIVEWAYS
1	1.10 CONCRETE PATIOS
1	1.11 CONCRETE PORCHES
1	1.12 CONCRETE STAIRS
1	1.13 CONCRETE BALCONIES
1	1.14 CONCRETE TERRACES
1	1.15 CONCRETE DRIVEWAYS
1	1.16 CONCRETE PATIOS
1	1.17 CONCRETE PORCHES
1	1.18 CONCRETE STAIRS
1	1.19 CONCRETE BALCONIES
1	1.20 CONCRETE TERRACES
1	1.21 CONCRETE DRIVEWAYS
1	1.22 CONCRETE PATIOS
1	1.23 CONCRETE PORCHES
1	1.24 CONCRETE STAIRS
1	1.25 CONCRETE BALCONIES
1	1.26 CONCRETE TERRACES
1	1.27 CONCRETE DRIVEWAYS
1	1.28 CONCRETE PATIOS
1	1.29 CONCRETE PORCHES
1	1.30 CONCRETE STAIRS
1	1.31 CONCRETE BALCONIES
1	1.32 CONCRETE TERRACES
1	1.33 CONCRETE DRIVEWAYS
1	1.34 CONCRETE PATIOS
1	1.35 CONCRETE PORCHES
1	1.36 CONCRETE STAIRS
1	1.37 CONCRETE BALCONIES
1	1.38 CONCRETE TERRACES
1	1.39 CONCRETE DRIVEWAYS
1	1.40 CONCRETE PATIOS
1	1.41 CONCRETE PORCHES
1	1.42 CONCRETE STAIRS
1	1.43 CONCRETE BALCONIES
1	1.44 CONCRETE TERRACES
1	1.45 CONCRETE DRIVEWAYS
1	1.46 CONCRETE PATIOS
1	1.47 CONCRETE PORCHES
1	1.48 CONCRETE STAIRS
1	1.49 CONCRETE BALCONIES
1	1.50 CONCRETE TERRACES
1	1.51 CONCRETE DRIVEWAYS
1	1.52 CONCRETE PATIOS
1	1.53 CONCRETE PORCHES
1	1.54 CONCRETE STAIRS
1	1.55 CONCRETE BALCONIES
1	1.56 CONCRETE TERRACES
1	1.57 CONCRETE DRIVEWAYS
1	1.58 CONCRETE PATIOS
1	1.59 CONCRETE PORCHES
1	1.60 CONCRETE STAIRS
1	1.61 CONCRETE BALCONIES
1	1.62 CONCRETE TERRACES
1	1.63 CONCRETE DRIVEWAYS
1	1.64 CONCRETE PATIOS
1	1.65 CONCRETE PORCHES
1	1.66 CONCRETE STAIRS
1	1.67 CONCRETE BALCONIES
1	1.68 CONCRETE TERRACES
1	1.69 CONCRETE DRIVEWAYS
1	1.70 CONCRETE PATIOS
1	1.71 CONCRETE PORCHES
1	1.72 CONCRETE STAIRS
1	1.73 CONCRETE BALCONIES
1	1.74 CONCRETE TERRACES
1	1.75 CONCRETE DRIVEWAYS
1	1.76 CONCRETE PATIOS
1	1.77 CONCRETE PORCHES
1	1.78 CONCRETE STAIRS
1	1.79 CONCRETE BALCONIES
1	1.80 CONCRETE TERRACES
1	1.81 CONCRETE DRIVEWAYS
1	1.82 CONCRETE PATIOS
1	1.83 CONCRETE PORCHES
1	1.84 CONCRETE STAIRS
1	1.85 CONCRETE BALCONIES
1	1.86 CONCRETE TERRACES
1	1.87 CONCRETE DRIVEWAYS
1	1.88 CONCRETE PATIOS
1	1.89 CONCRETE PORCHES
1	1.90 CONCRETE STAIRS
1	1.91 CONCRETE BALCONIES
1	1.92 CONCRETE TERRACES
1	1.93 CONCRETE DRIVEWAYS
1	1.94 CONCRETE PATIOS
1	1.95 CONCRETE PORCHES
1	1.96 CONCRETE STAIRS
1	1.97 CONCRETE BALCONIES
1	1.98 CONCRETE TERRACES
1	1.99 CONCRETE DRIVEWAYS
1	2.00 CONCRETE PATIOS
1	2.01 CONCRETE PORCHES
1	2.02 CONCRETE STAIRS
1	2.03 CONCRETE BALCONIES
1	2.04 CONCRETE TERRACES
1	2.05 CONCRETE DRIVEWAYS
1	2.06 CONCRETE PATIOS
1	2.07 CONCRETE PORCHES
1	2.08 CONCRETE STAIRS
1	2.09 CONCRETE BALCONIES
1	2.10 CONCRETE TERRACES
1	2.11 CONCRETE DRIVEWAYS
1	2.12 CONCRETE PATIOS
1	2.13 CONCRETE PORCHES
1	2.14 CONCRETE STAIRS
1	2.15 CONCRETE BALCONIES
1	2.16 CONCRETE TERRACES
1	2.17 CONCRETE DRIVEWAYS
1	2.18 CONCRETE PATIOS
1	2.19 CONCRETE PORCHES
1	2.20 CONCRETE STAIRS
1	2.21 CONCRETE BALCONIES
1	2.22 CONCRETE TERRACES
1	2.23 CONCRETE DRIVEWAYS
1	2.24 CONCRETE PATIOS
1	2.25 CONCRETE PORCHES
1	2.26 CONCRETE STAIRS
1	2.27 CONCRETE BALCONIES
1	2.28 CONCRETE TERRACES
1	2.29 CONCRETE DRIVEWAYS
1	2.30 CONCRETE PATIOS
1	2.31 CONCRETE PORCHES
1	2.32 CONCRETE STAIRS
1	2.33 CONCRETE BALCONIES
1	2.34 CONCRETE TERRACES
1	2.35 CONCRETE DRIVEWAYS
1	2.36 CONCRETE PATIOS
1	2.37 CONCRETE PORCHES
1	2.38 CONCRETE STAIRS
1	2.39 CONCRETE BALCONIES
1	2.40 CONCRETE TERRACES
1	2.41 CONCRETE DRIVEWAYS
1	2.42 CONCRETE PATIOS
1	2.43 CONCRETE PORCHES
1	2.44 CONCRETE STAIRS
1	2.45 CONCRETE BALCONIES
1	2.46 CONCRETE TERRACES
1	2.47 CONCRETE DRIVEWAYS
1	2.48 CONCRETE PATIOS
1	2.49 CONCRETE PORCHES
1	2.50 CONCRETE STAIRS
1	2.51 CONCRETE BALCONIES
1	2.52 CONCRETE TERRACES
1	2.53 CONCRETE DRIVEWAYS
1	2.54 CONCRETE PATIOS
1	2.55 CONCRETE PORCHES
1	2.56 CONCRETE STAIRS
1	2.57 CONCRETE BALCONIES
1	2.58 CONCRETE TERRACES
1	2.59 CONCRETE DRIVEWAYS
1	2.60 CONCRETE PATIOS
1	2.61 CONCRETE PORCHES
1	2.62 CONCRETE STAIRS
1	2.63 CONCRETE BALCONIES
1	2.64 CONCRETE TERRACES
1	2.65 CONCRETE DRIVEWAYS
1	2.66 CONCRETE PATIOS
1	2.67 CONCRETE PORCHES
1	2.68 CONCRETE STAIRS
1	2.69 CONCRETE BALCONIES
1	2.70 CONCRETE TERRACES
1	2.71 CONCRETE DRIVEWAYS
1	2.72 CONCRETE PATIOS
1	2.73 CONCRETE PORCHES
1	2.74 CONCRETE STAIRS
1	2.75 CONCRETE BALCONIES
1	2.76 CONCRETE TERRACES
1	2.77 CONCRETE DRIVEWAYS
1	2.78 CONCRETE PATIOS
1	2.79 CONCRETE PORCHES
1	2.80 CONCRETE STAIRS
1	2.81 CONCRETE BALCONIES
1	2.82 CONCRETE TERRACES
1	2.83 CONCRETE DRIVEWAYS
1	2.84 CONCRETE PATIOS
1	2.85 CONCRETE PORCHES
1	2.86 CONCRETE STAIRS
1	2.87 CONCRETE BALCONIES
1	2.88 CONCRETE TERRACES
1	2.89 CONCRETE DRIVEWAYS
1	2.90 CONCRETE PATIOS
1	2.91 CONCRETE PORCHES
1	2.92 CONCRETE STAIRS
1	2.93 CONCRETE BALCONIES
1	2.94 CONCRETE TERRACES
1	2.95 CONCRETE DRIVEWAYS
1	2.96 CONCRETE PATIOS
1	2.97 CONCRETE PORCHES
1	2.98 CONCRETE STAIRS
1	2.99 CONCRETE BALCONIES
1	3.00 CONCRETE TERRACES

CLIENT: THE CREST  
 PROJECT: 1667 SK A  
 ADDRESS: 1667 SK A  
 ADDRESS: 1667 SK A  
 ADDRESS: 1667 SK A

DATE: 10/20/2011  
 DRAWN BY: [Name]  
 CHECKED BY: [Name]  
 SCALE: 1/8" = 1'-0"

TITLE: LEVEL T7  
 RL: 86.475

1667 SK A  
 1667\*21



PLANS IN ADAPTED MODE

© 2011 The Crest. All rights reserved. No part of this document may be reproduced without the prior written permission of The Crest.

























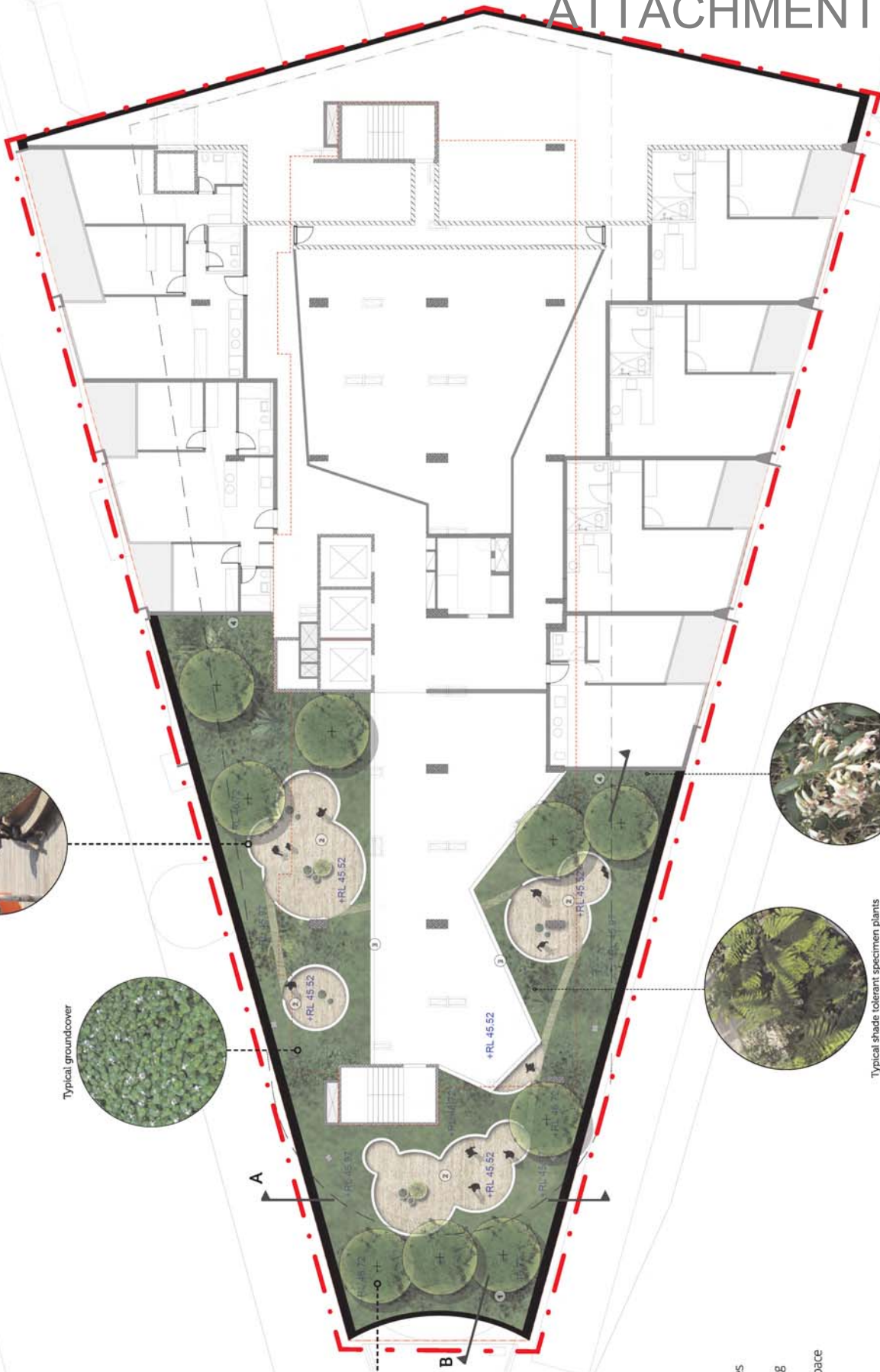


Architect:

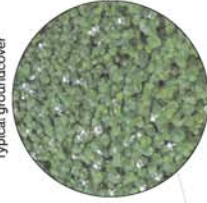
Drawn: GF  
Checked: LP | SC | KL

Level 02 Landscape Plan  
Private Communal Terrace

The Crest, Kings Cross  
ASPECT Studios™



Fixed seating to garden rooms



Typical groundcover



Feature trees



Typical shade tolerant specimen plants



Typical climbing plants

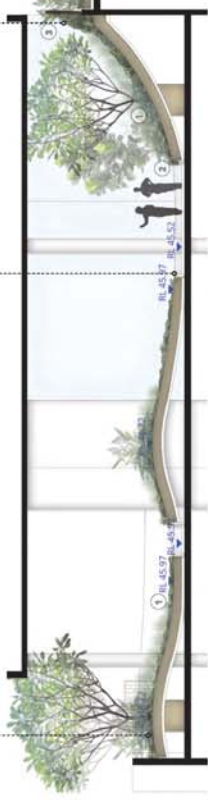
--- Site Boundary

1. Mounded planting with lush plants and trees specified for the low light conditions
2. Paved communal garden rooms with seating walls and moveable furniture
3. Glazing line between indoor and outdoor space
4. Climbing plants to the upper floor





Section A



Section B

1. 450mm deep planted mounds with specimen trees in 1200mm containers
2. Paved communal rooms with seating walls and moveable furniture
3. Climbing plants to the upper terraces

### Planting Strategy

#### Trees



*Ficus lyrata*



*Plumeria obtusa*

#### Groundcovers - Mound planting



*Viola hederacea*



*Alyca reptans*



*Dichondra repens*



*Solitalia soierollii*



*Convolvulus mauritanicus*

#### Lush shade tolerant planting



*Aspidistra elatior*



*Cordyline glauca*



*Philodendron 'Xanadu'*

#### Climbers



*Pyrostegia venusta*



*Pandorea pandorana*



*Neomarica gracilis*



*Lomandra lysteria*



*Heliconia argus 'Red Christmas'*

# ATTACHMENT A

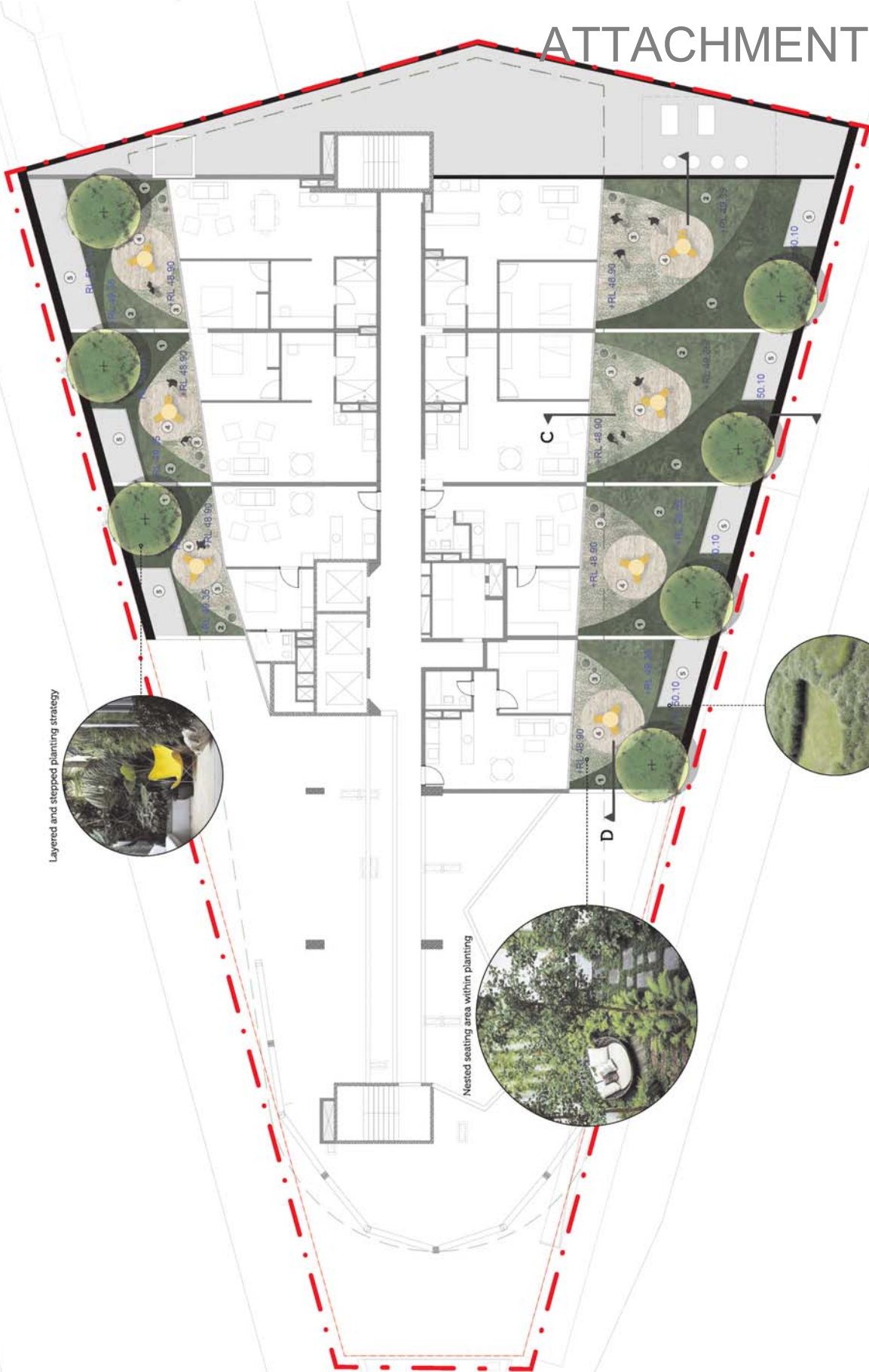


Architect:

Drawn: GF  
Checked: LP | SC | KL

Level 02 Landscape Sections  
Planting strategy

# ATTACHMENT A



Layered and stepped planting strategy



Nestled seating area within planting



Typical groundcovers



--- Site Boundary

1. Mound planting, up to 1200mm soil depth to allow tree growth
2. Low mound planting 450mm deep
3. Interstitial planting and pavers
4. Paved area with moveable furniture
5. Void to balconies below





# ATTACHMENT A

1. Mound planting, up to 1200mm soil depth to allow tree growth
2. Low mound planting, 600mm deep
3. Interstitial planting and pavers
4. Paved area with moveable furniture
5. Climbing plants from a lower level

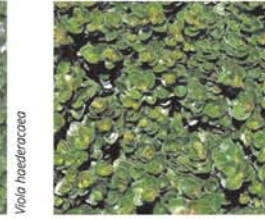


## Planting Strategy

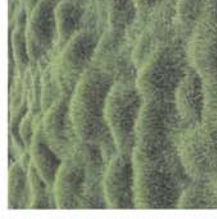
### Trees



### Groundcovers - Mound planting



### Mass planting



### Interstitial planting



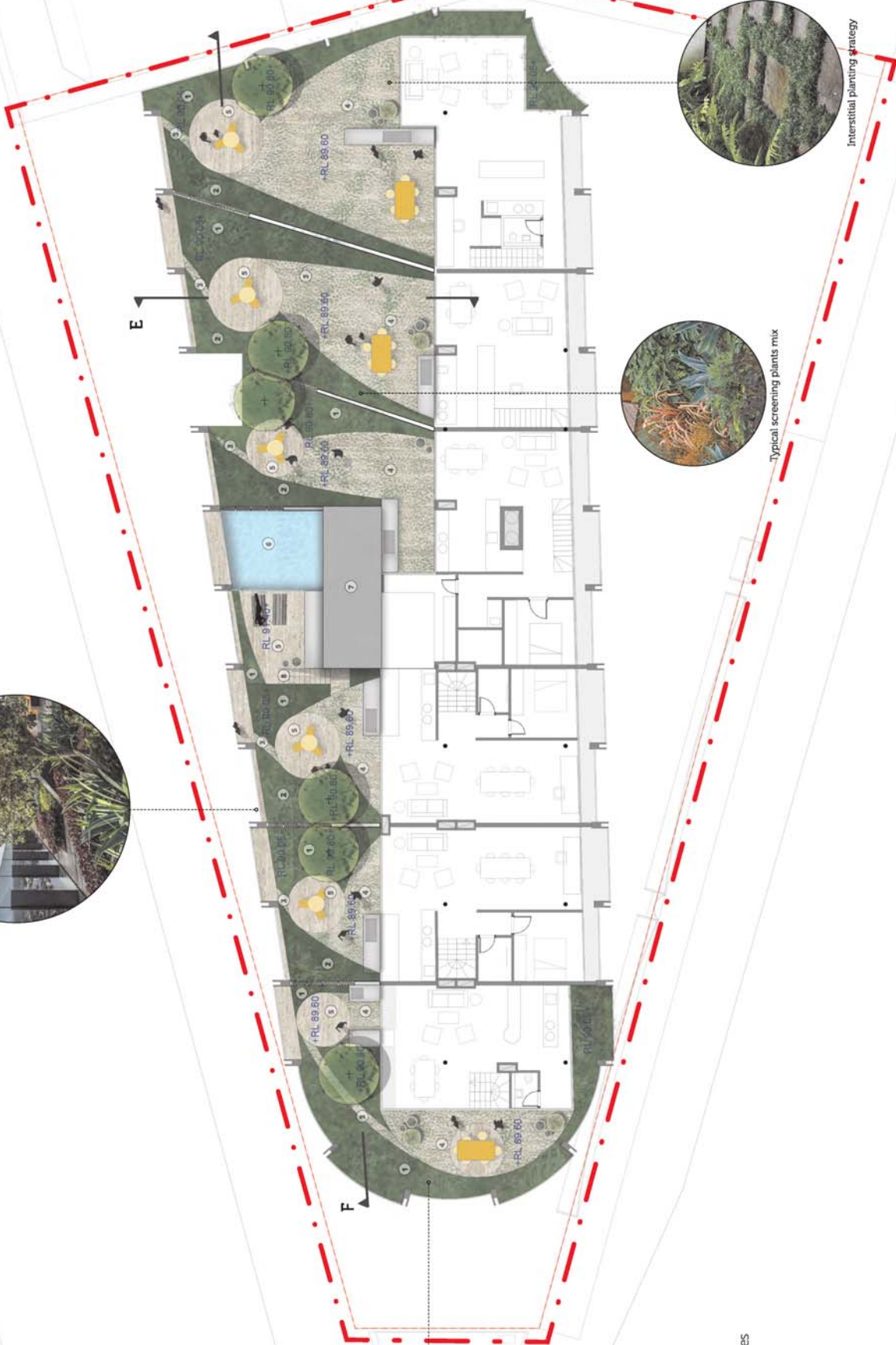
### Screen planting





# ATTACHMENT A

Paving + planting strategy to building edge



Typical groundcovers



Typical screening plants mix



Interstitial planting strategy

--- Site Boundary

1. Mound planting, up to 450mm depth
2. Mound planting, up to 1200 soil depth with trees and screening plants to adjacent roof garden
3. Stone path to building edge
4. Interstitial planting and pavers
5. Paved garden room with moveable furniture
6. Private swimming pool
7. Lift over-run, 1800mm above terrace level
8. Stairs to riser swimming pool





Fence + plants screening strategy



Paving + planting strategy to building edge



Typical screening plants mix



1. Mound planting, up to 450mm depth
2. Mound planting, up to 1200 soil depth with trees and screening plants to adjacent roof garden
3. Stone path to building edge
4. Interstitial planting and pavers
5. Paved garden room with moveable furniture
6. Private swimming pool
7. Stairs to risd swimming pool



Section E

Section F

### Planting Strategy

#### Trees



*Hibiscus tiliaceus*

#### Groundcovers - Mound planting



*Baccharis virgata nana*

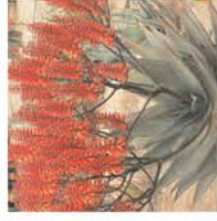


*Sedum 'Gold Mound'*

#### Succulent planting



*Agave stricta*



*Aloe hybrid leo 002 'Big Red'*



*Aloe ferox*

#### Interstitial planting



*Thymus serpyllum*



*Pyrostegia venusta*

#### Screen planting



*Carpobrotus edulis*



*Crassula ovata*



*Alcantarea extensa*



*Diets Indibacace*



*Echeveria agavovoides*



*Origanum vulgare*



*Pandorea pandorana*

# ATTACHMENT A